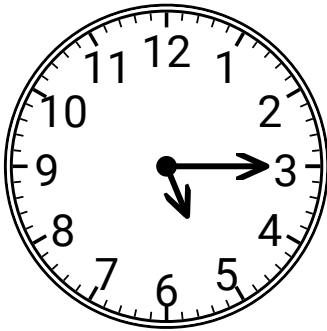


# Telling Time Worksheet #3

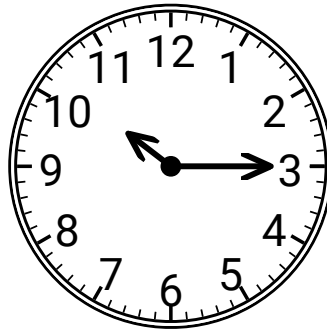
## Solutions

1)



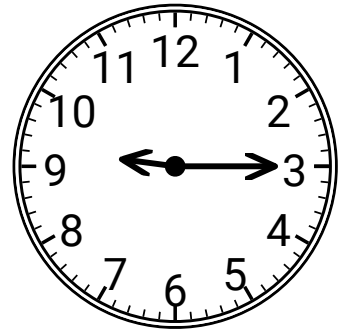
Quarter past 5:00

2)



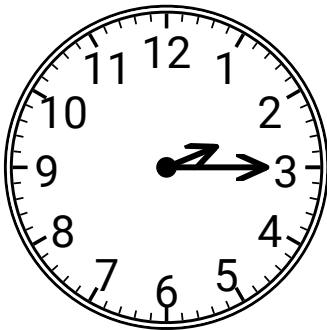
Quarter past 10:00

3)



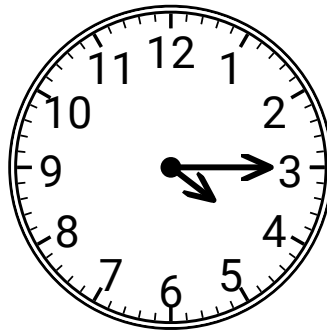
Quarter past 9:00

4)



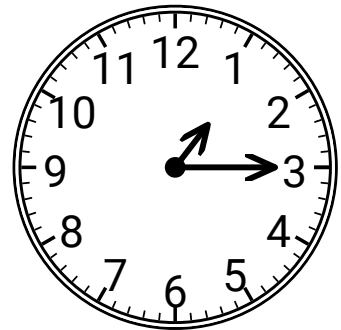
Quarter past 2:00

5)



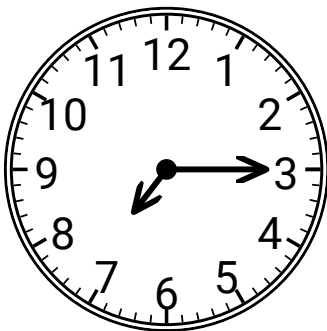
Quarter past 4:00

6)



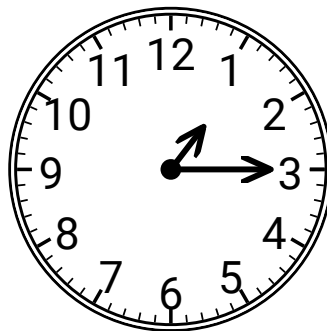
Quarter past 1:00

7)



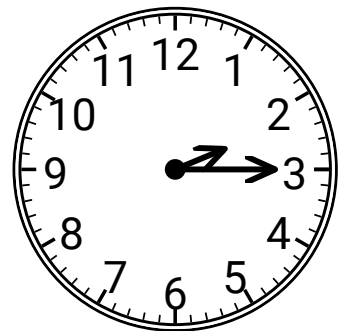
Quarter past 7:00

8)



Quarter past 1:00

9)



Quarter past 2:00